








DISTANCES SHOWN ON THIS PLAN ARE IN FEET AND CAN BE CONVERTED TO METRES BY MULTIPLYING BY 0.3048.

FRONTAGES SHOWN ARE MEASURED AT THE INTERSECTION OF THE SIDELINES WITH THE PRESENT WATERS EDGE.

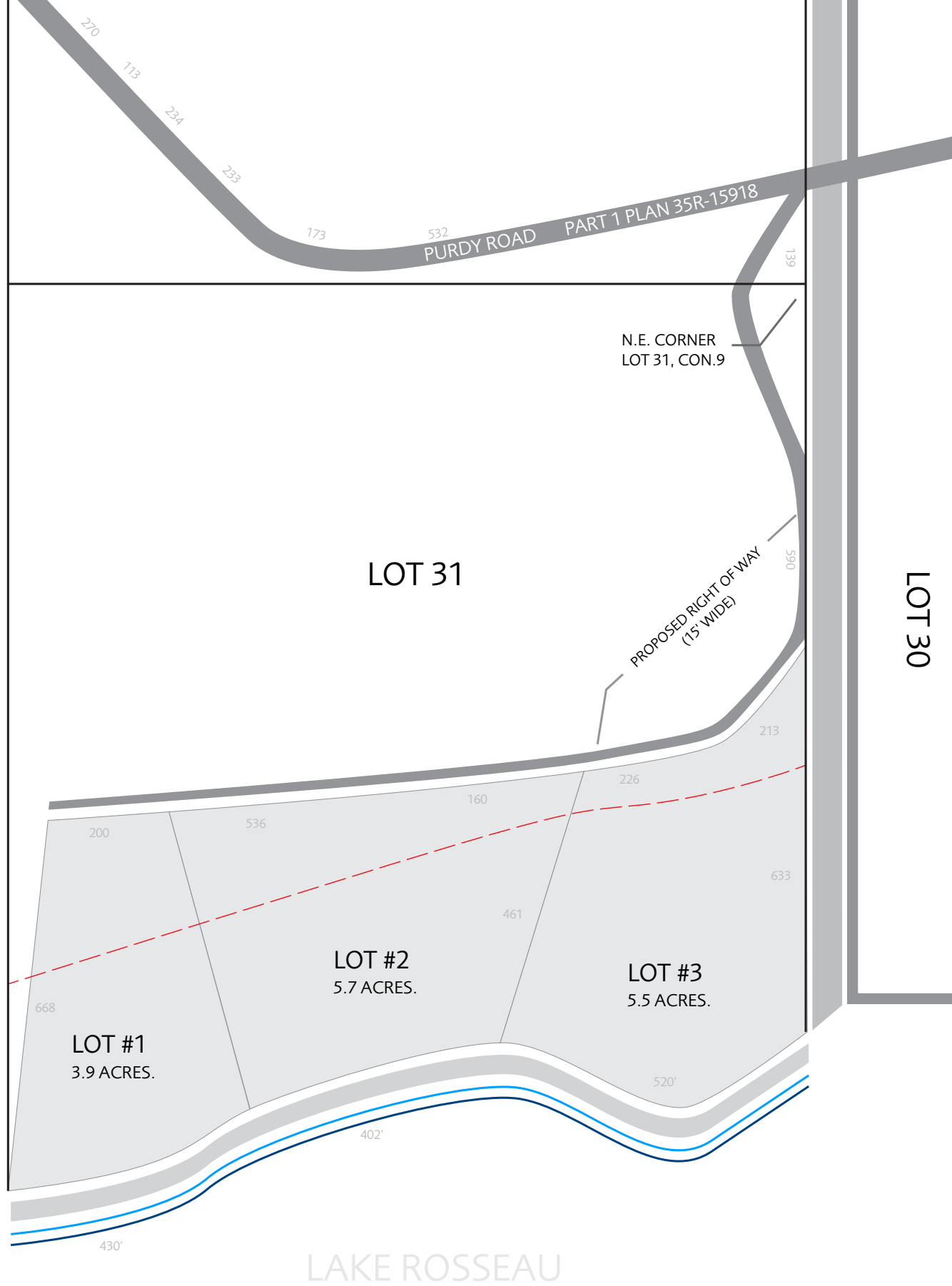
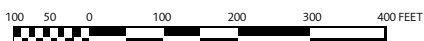
LOTS 1, 2, AND 3 DO NOT INCLUDE THE ORIGINAL SHORE ROAD ALLOWANCE IN FRONT.

LEGEND

-  ORIGINAL ROAD ALLOWANCE BETWEEN LOTS 30 AND 31
-  ORIGINAL SHORE ROAD ALLOWANCE (NOT CLOSED)
-  ORIGINAL WATERS EDGE (APPROX.)
-  PRESENT WATERS EDGE (BY SURVEY)
-  HYDRO LINE

SKETCH TO ILLUSTRATE PART OF
LOT 31
CONCESSION 9
GEOGRAPHIC TOWNSHIP OF
WATT TOWNSHIP OF MUSKOKA LAKES
DISTRICT MUNICIPALITY OF MUSKOKA

SCALE: 1 INCH=100 FEET



LOT 31

LOT 30

LOT #2
5.7 ACRES.

LOT #3
5.5 ACRES.

LOT #1
3.9 ACRES.

PURDY ROAD PART 1 PLAN 35R-15918

N.E. CORNER
LOT 31, CON.9

PROPOSED RIGHT OF WAY
(15' WIDE)

LAKE ROSSEAU